



Ingegneria del Software

Corso di Laurea in Informatica per il Management

Into OO Design

Davide Rossi
Dipartimento di Informatica
Università di Bologna



Into the solution domain

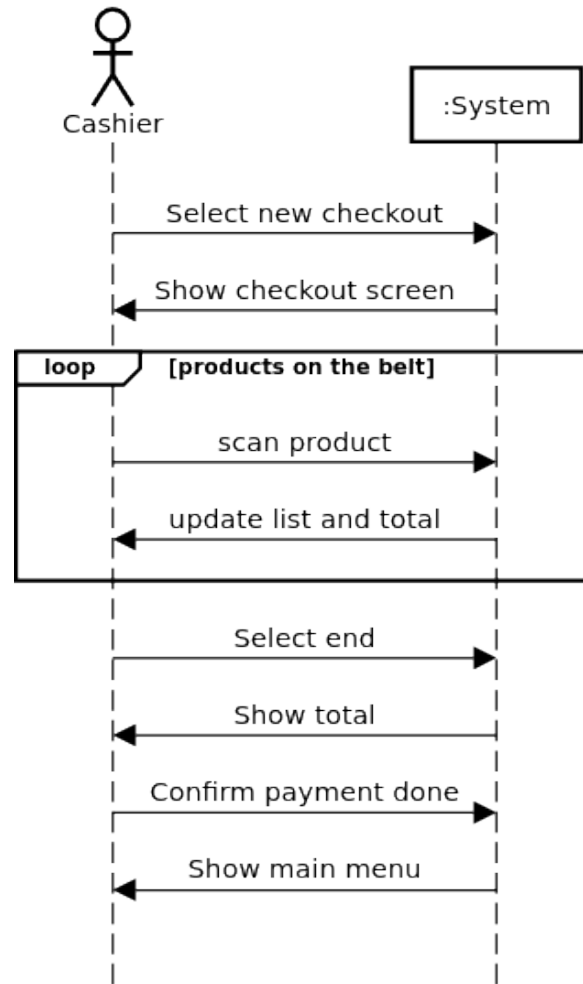
- We know what the system should do, now we have to design a system that does it
- There are more modeling methods than variations of coffee at Starbucks
- No magic approach

Super simplified UP-inspired method

- For each use case
- For each system sequence diagram of the use case
- Split the system in interface layer and business logic/domain layer
- Find/create elements in the business logic/domain layer that are responsible to support all the interactions at the interface layer
- Incrementally add new elements to the design class diagram/add operations

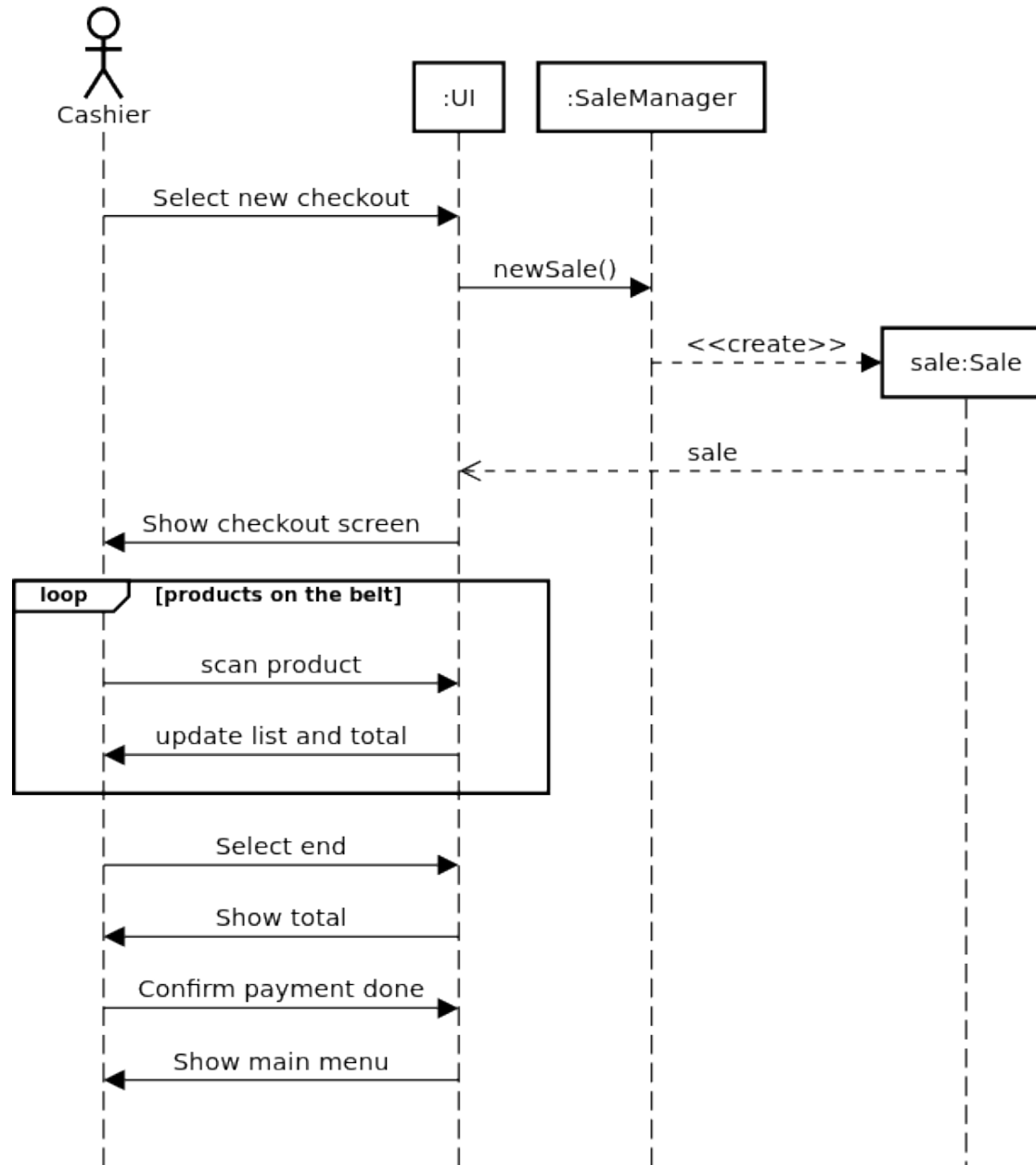


Sale SD

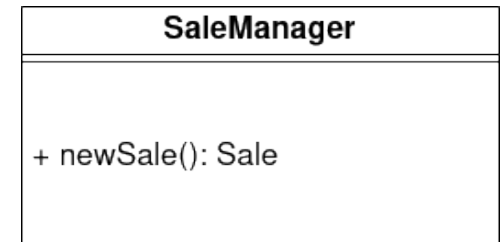
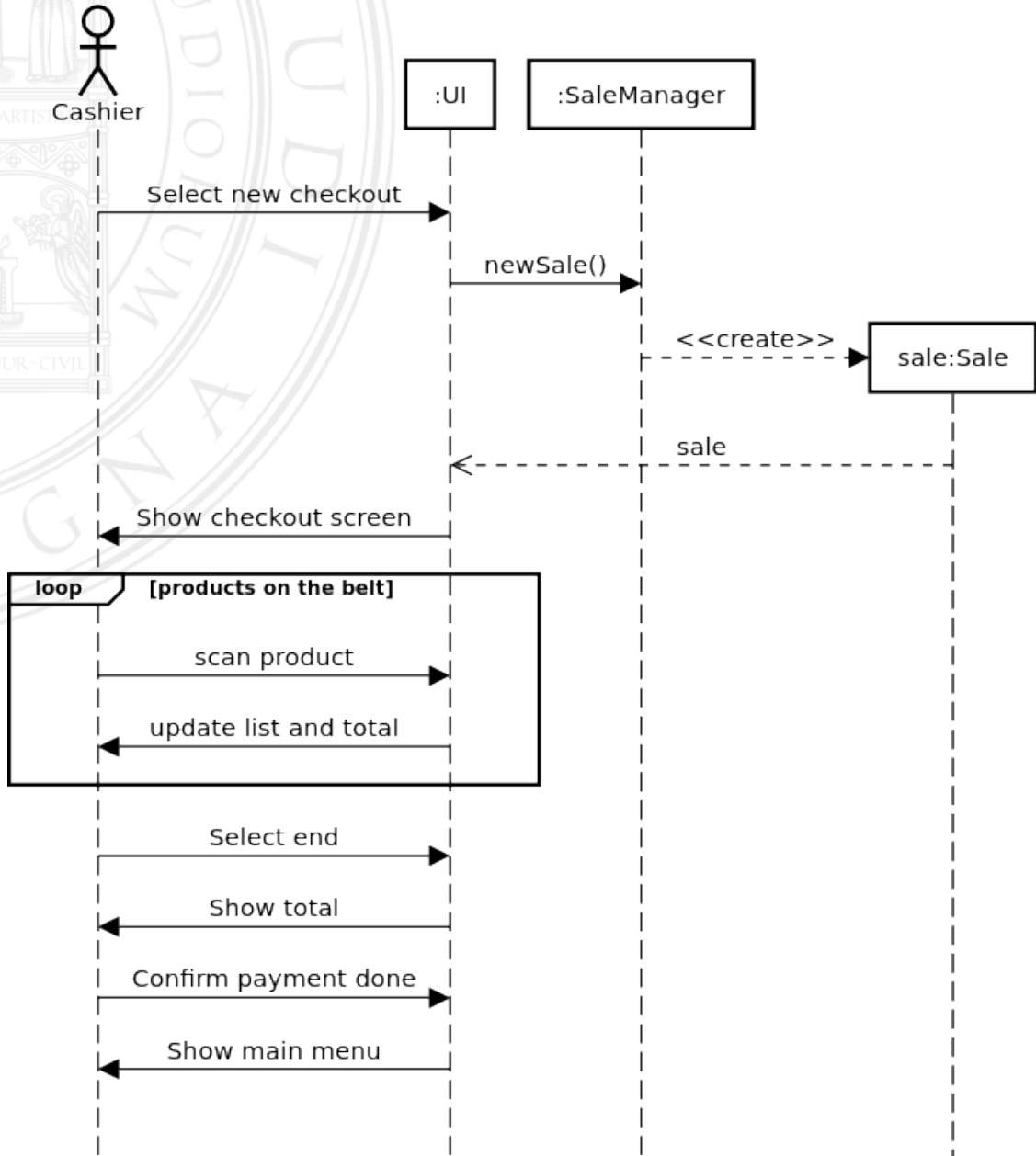




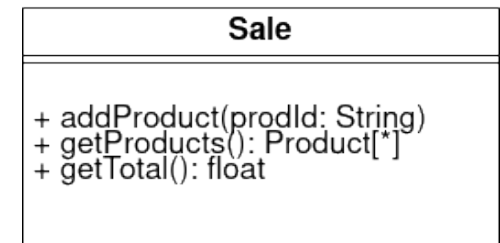
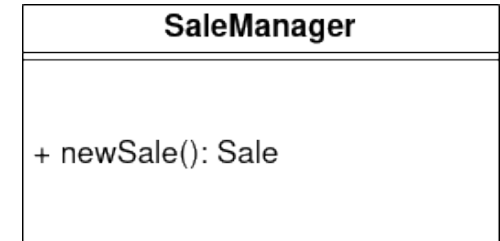
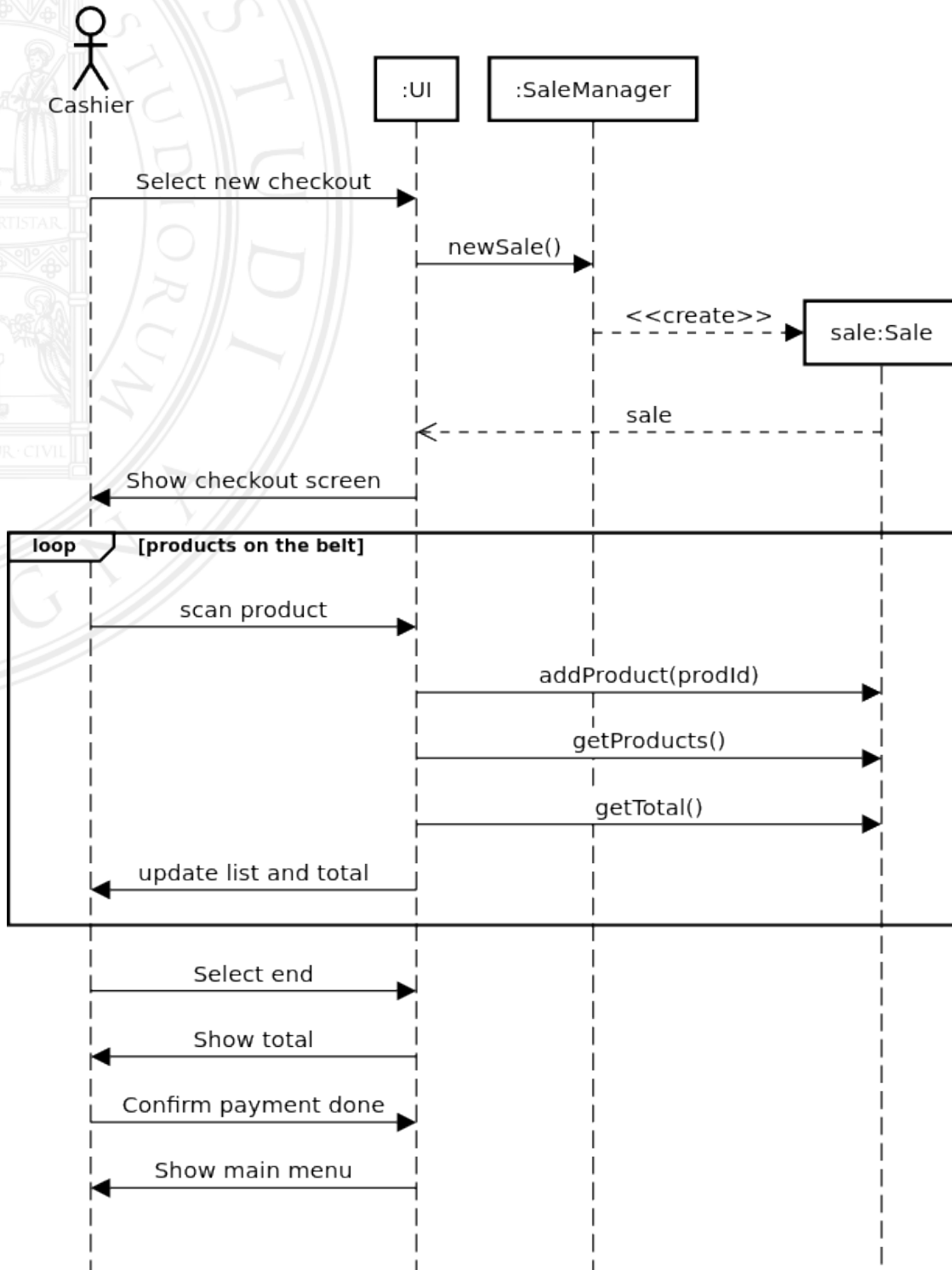
Sale SD



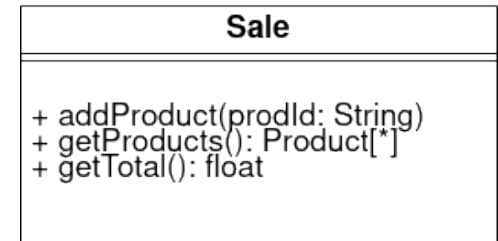
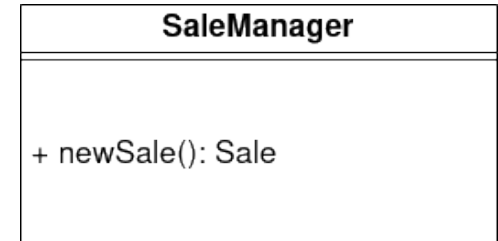
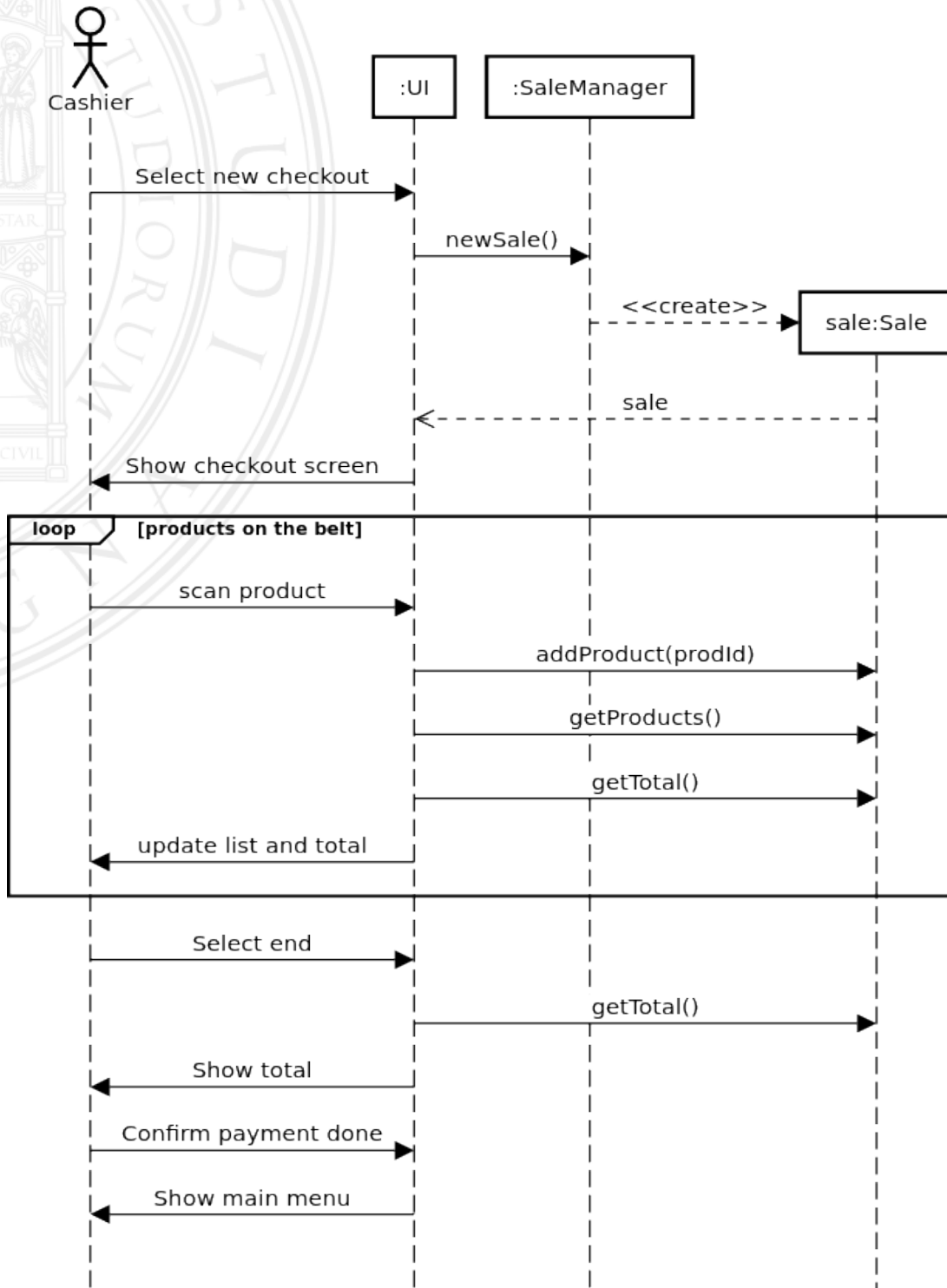
Sale SD



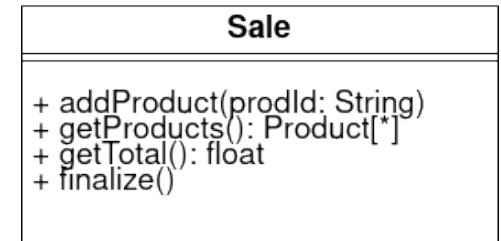
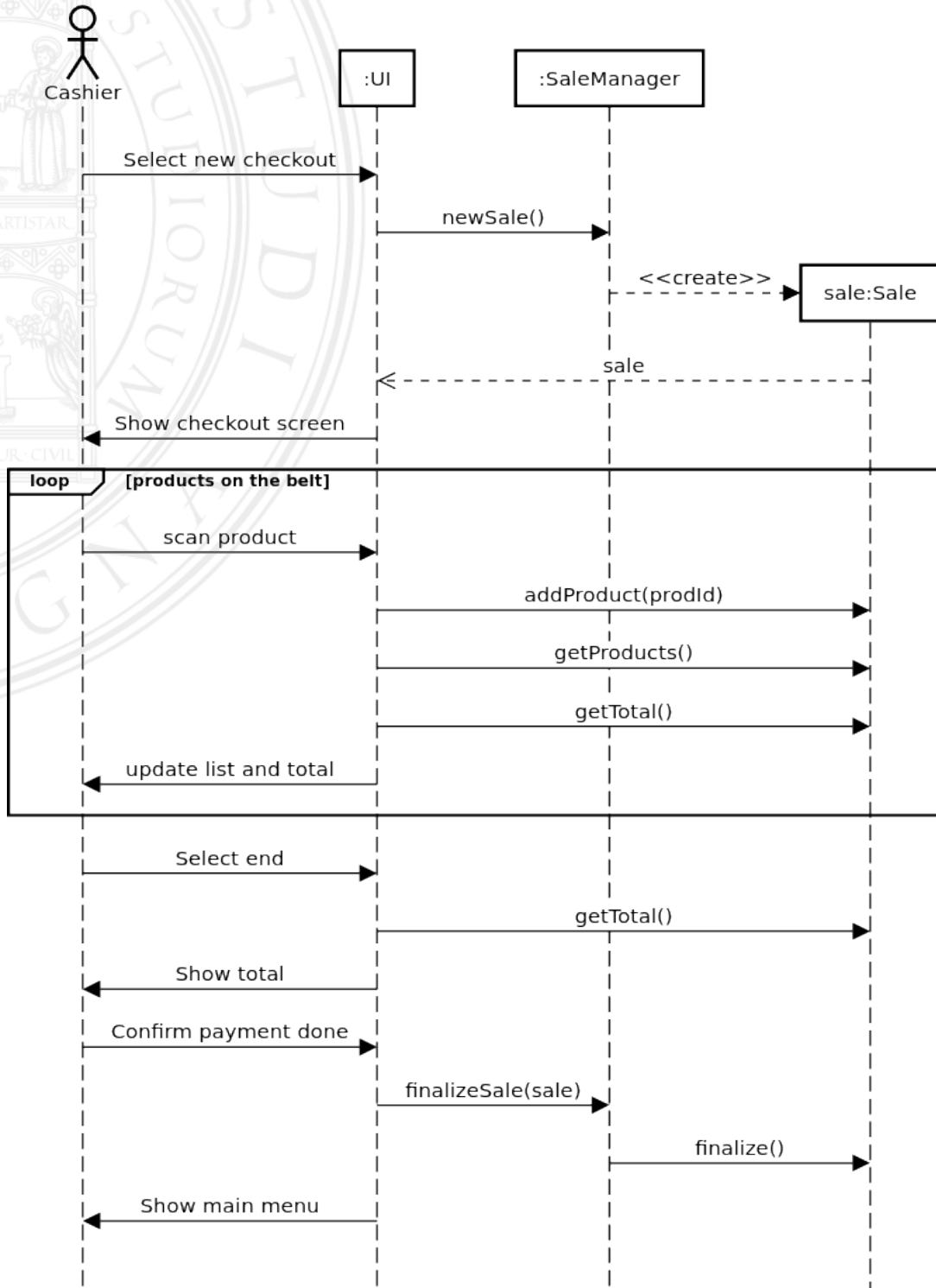
Sale SD



Sale SD



Sale SD



Super simplified UP-inspired method

That's it.



Super simplified UP-inspired method

That's it. If you do not care about quality.